



## WHAT'S ON

September - December 2023

Explore the past, meet the present, create the future.  
[thewhitaker.org](http://thewhitaker.org)

# Donations at The Whitaker

The Whitaker is a **registered charity**. Your donations will contribute towards running the building and delivering our activities

## TO DONATE

Visit our donations box at reception or you can donate online via our website [www.thewhitaker.org](http://www.thewhitaker.org)

By donating to The Whitaker, you will help us:



# FREE ACTIVITIES EVERY SATURDAY & SUNDAY

## Object handling sessions

11AM - 12PM

Look out for our weekend handling sessions. Join one of our volunteers or our curator to handle objects from our amazing collections.

## Guided tour of the museum

2PM - 3PM

Join us for a free tour of the museum, including The Cabinet of Curiosities. Created by Bob Frith, the cabinet exhibition includes objects, taxidermy, paintings and furniture, combined to create a theatrical showcase of The Whitaker's eclectic collection.



# WHAT'S COMING UP AT THE WHITAKER

Family Activities Exhibitions & related workshops Christmas Events Film Night Autumn Events Halloween Events

## ONGOING EXHIBITIONS

Helen Angell,  
Harriet Mena Hill &  
Mandy Payne  
Travels Through The  
Valley of Stone

Paddy Campbell  
Outside In - Inside Out

## ONGOING EXHIBITIONS

British Textile Biennial  
Fragments of  
our time

29th September -  
10th December

## ONGOING EXHIBITIONS

Ruby Tingle  
Afterlife

New Graduate Award

14th December -  
10th March

## September

Saturday 2<sup>nd</sup>  
Thursday 7<sup>th</sup>  
Thursday 7<sup>th</sup>  
Sunday 10<sup>th</sup>  
Saturday 16<sup>th</sup>  
Thursday 21<sup>st</sup>  
Saturday 23<sup>rd</sup>  
Saturday 30<sup>th</sup>

## October

Thursday 5<sup>th</sup>  
Saturday 7<sup>th</sup>  
Saturday 7<sup>th</sup>  
Thursday 12<sup>th</sup>  
Saturday 14<sup>th</sup>  
Thursday 19<sup>th</sup>  
Sunday 22<sup>nd</sup>  
Wednesday 25<sup>th</sup>  
Saturday 28<sup>th</sup>  
Saturday 28<sup>th</sup>  
Sunday 29<sup>th</sup>

## November

Thursday 2<sup>nd</sup>  
Saturday 4<sup>th</sup>  
Thursday 9<sup>th</sup>  
Thursday 9<sup>th</sup>  
Thursday 16<sup>th</sup>  
Saturday 25<sup>th</sup>  
Thursday 30<sup>th</sup>

## December

Saturday 2<sup>nd</sup>  
Sunday 3<sup>rd</sup>  
Thursday 7<sup>th</sup>  
Saturday 9<sup>th</sup>  
Thursday 14<sup>th</sup>  
Saturday 16<sup>th</sup>  
Saturday 23<sup>rd</sup>

Family Antics at the Museum  
Film Night: Jazz on a Summer Day  
Paddy Campbell: Artist Walk & Talk  
Rossendale 60's Festival  
Bringing Out Hidden Histories Collections talk with our Curator  
Film Night: Everything Everywhere All At Once  
End of show reflection with Paddy Campbell  
British Textile Biennial Opening Event

Film Night: Rye Lane  
Family antics at the Museum  
British Textile Biennial: Curatorial walk through  
Hands up Who's Happy?  
Weaving Workshop with Jennifer Reid  
Film Night: Grace Jones: Bloodlight & Bami  
Fragments of Our Time Family Textile Workshop  
Family antics at the museum  
Pumpkin trail  
Halloween Special Curator Talk  
Pumpkin trail

Film Night: The Fablemans  
Family Antics at the Museum  
Figuring Out... Arts Council England funding  
Cottonshed Theatre Company: Beware of the Doll  
Film Night: Barton Fink  
Modes of Looking: Object Discussion  
Blackburn Chamber Choir Performance

WINTERFEST  
WINTERFEST  
Film Night: Hairspray  
Bar & Kitchen: Christmas Party Night  
Opening Night: Ruby Tingle & New Graduate  
Create with Caroline: Christmas Family Workshop  
Christmas Film: The Muppet Christmas Carol



## Paddy Campbell Outside In – Inside Out

Exhibition closes | Sunday 24 September

Inspired by the work of Richard Long, Cornelia Parker and Andy Goldsworthy, this exhibition of constructed objects from 'The Whitaker Yard' brings a slice of the outside in.

Campbell has spent several months working on the developing garden behind The Whitaker, reusing and transforming found objects into sculpture and site specific installation. He will take these objects, mostly constructed from stone and embellished with copper and represent them in the gallery setting.



## Helen Angell, Harriet Mena Hill & Mandy Payne Travels Through The Valley of Stone

Exhibition closes | Sunday 24 September

Connected by their love of urban spaces, artists Mandy Payne and Harriet Mena Hill with poet Helen Angell have created brand new work in paint, textiles and words to capture the spirit and beauty of Rossendale. The exhibition follows their journey of discovery through the valley with an emphasis on the present as well as a recognition of the area's rich past. Journeying mostly on foot, they explore the notion of place as one created through personal experience.

Using local materials such as felt, slate, quarry stone and experimental concrete from a nearby works, the trio reflect on the ever-changing nature of where we live. Current concerns about balancing progress with the environment as well as preserving our heritage underpin this exhibition. Their conversations and walks with enthusiasts as well as research in the archives brought the unfamiliar to life – not least of which was the discovery that Mandy Payne's great-grandma used to live next door to The Whitaker!

Don't miss out!

Both 'Outside In – Inside Out' and 'Travels Through the Valley of Stone' are showing until Sunday 24th September

[thewhitaker.org](http://thewhitaker.org)

## Thursday 7 September Artist Walk and Talk

Paddy Campbell has created a collection of site-specific artworks, environmentally sensitive sculptures, produced and placed within The Whitaker Yard' and The Whitaker's Gallery One. The sculptures link the 'outdoors' space of contemplation with the 'indoors' space of contemporary art exhibition and this offers the chance to bring 'natural and fashioned' objects into The Whitaker, playing with the objects within the internal, controlled white space of Gallery One. Within these spaces people can engage and commune with the natural environment, linking themselves to themes of environmental play.

Join Paddy in a walk around the indoor and outdoor space at The Whitaker. Moving through the yard, corridor and gallery spaces, Paddy will be discussing the creation of work for Outside In – Inside Out, talking about the use and development of sculptural ideas from the natural form.

6:30pm - 7:30pm  
£4 | \*booking required  
Recommended for age 16+

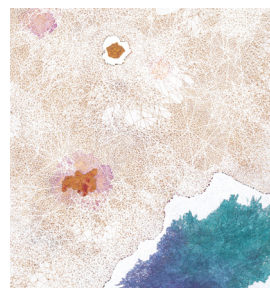
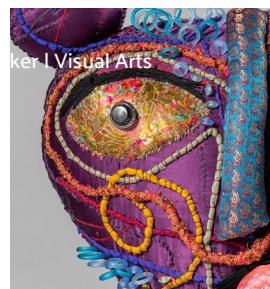
## Saturday 23 September End of show reflection

Join us for a free end of show reflection exploring the exhibition and the response to it. You'll be led by the Paddy Campbell in exploring ideas and concepts generated by the work with a look to generating future sculptures and influencing creative practices.

2:00pm  
FREE







# British Textile Biennial

# Fragments of Our Time

Friday 29 September – Sunday 10 December

Fragments of Our Time is a contemporary textile art exhibition featuring 17 South Asian artists brought together for the first time from the UK, USA, Pakistan, India, and Bangladesh. Curated by Uthra Rajgopal, these artworks consider sustainability in the context of the environment, economics, and society. The materials, techniques and concepts highlight themes of labour, networks, migration, spiritual and emotional connections to textiles. From natural fibres and natural dyes to found objects, discarded clothing and debris, this exhibition presents an extraordinary display of woven, stitched, dyed, collaged, and felted artworks, ranging from the immersive to the delicate.

## Saturday 30 September

## Opening Event

Join us for the official opening of the exhibition with a special performance by Song Geet, an all female South Asian choir.

There will be an opportunity to meet and talk to the curator and some of the artists showing work as part of the Fragments of Our Time exhibition.

1:00pm - 4:00pm  
FREE

Saturday 25 November

## Modes of Looking

## Object Discussion

As we come to the end of the British Textile Biennial exhibition, come and explore some of our textile collection. We'll be talking about felting, printing and the textile industry in Rossendale, linking to the local history of manufacturing. Our colourful MASCO felt samples will be on display, among other items from our stores. You'll be led in this session by Uthra Rajjopal, Curator of Fragments of Our Time and Gina, Curator at The Whitaker.

2:00pm - 3:00pm  
£3 | \*booking required  
Recommended age 14+

## British Textile Biennial themed workshops

Saturday 7 October

## Curatorial walk through

Join curator Uthra Rajgopal for an informative guided walk through the Fragments of our Time exhibition to learn more about the individual artists and the themes and thinking behind the exhibition. Uthra will also have with her a small selection of handling samples from some of the artists.

11:00am | 2:00pm  
FREE, Donations welcome  
\*no booking required

Sunday 22 October

## Fragments of Our Time Family Textile Workshop

Join BTB artist Robina Akhter Ullah for a fun day learning about paper piecing techniques. You will have an opportunity to make your own paper textile art and can learn more about Robina's work featured in the exhibition *Fragments of Our Time*. Open to all, no experience necessary. All materials will be provided on the day.

11:00am - 3:00pm  
FREE, Donations welcome  
\*no booking required  
Recommended age 7+

Saturday 14 October

## Weaving Workshop with Jennifer Reid

This workshop will introduce you to the intricacies of weaving.

**This first session is aimed at individuals and craft groups with some weaving experience.** With an understanding of the processes already in place, you'll create your own decorative piece before this is incorporated into a larger banner with potential to hang in our corridor gallery.

10:00am - 12:30pm  
£8.00 | \*booking required  
Recommended age 16+

This second session is aimed at individuals with no experience of weaving or textile crafting.

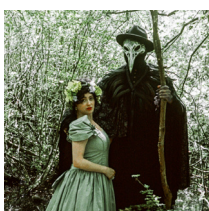
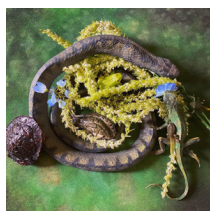
To start, you'll be shown the basics of weaving in a demonstration, before creating your own piece on an individual handloom. Your segment may then be incorporated into a larger banner with potential to hang in our corridor gallery.

1:00pm - 3:30pm  
£8.00 | \*booking required  
Recommended age 16+



## Ruby Tingle Afterlife

Thursday 14 December – Sunday 10 March



## New Graduate Award

Thursday 14 December – Sunday 10 March

Each year The Whitaker offers a new arts graduate their first solo show with a fee and professional development support from our Creative Director.

Look out on social media for which emerging artist has been successful and come along to support them at the opening event on 14<sup>th</sup> December.

The Whitaker | Visual Arts

Ruby Tingle presents her new work *Afterlife*, resurrecting the Whitaker's off show taxidermy collection as new dioramas in a temporary 'swamp heaven'. The show draws together installation, works on paper, music, scent and performance to create a multi sensory fantasy wetlands, based on Tingle's fascination with the habitat and new stories dreamt up from her personal experiences in nature. Inspired initially by the Whitaker's famous tableaux *The Tiger* & *The Python*, these new interventions echo the historic use of taxidermy where unnatural depictions of nature were favoured over scientific accuracy; the diorama has been adopted as a myth making tool. Environmental conversation under sets this new work- the fabrication of a dream afterworld, based on real living spaces for these dead specimens promotes Tingle's belief that the idea of 'heaven' is already here on earth, in nature, and must be preserved.

Ruby Tingle is an award winning audiovisual artist and performer represented by No Such Thing Records and PAPER Gallery. Her practice is concerned with the reconstruction of familiar forms and presenting the extraordinary as authentic. Expanded collage spans performance, installation, sound, work on paper and interventions with museum collections. A fascination with water, wetlands habitat and herpetology roots her material and conceptual investigation, with an aim to present unnatural histories, dreamworlds and new myths which blur the lines between science and cryptozoology. Tingle's music mixes elements of natural sound, high range celestial vocals and electronica to produce romantic and dreamy, experimental 'music from the swamp'. She has exhibited at Warrington Museum & Art Gallery, Saatchi Gallery, Manchester Art Gallery, the Venice Biennale and Chetham's Library, with music performances and commissions at Manchester Jazz Festival, Glastonbury, Bluebird and New Colossus Festival in New York.

### Thursday 14 December Opening Event & Live Music Performance

On December 14<sup>th</sup> we will be opening two new shows, *Afterlife* by Ruby Tingle and our New Graduate Award show. After a private viewing of the new exhibitions, Ruby will perform her new single which will be released that evening and available on all streaming platforms via No Such Thing Records. It will also be available on limited edition vinyl in The Whitaker Shop. The event will also see the launch of a new conservation beer created between Duration Brewing & Drink Beer Save Turtles to raise funds and awareness for charity Turtle Survival Alliance.

7pm | FREE

The Whitaker | Autumn Events

## Autumn Events

Sunday 10 September

### Rossendale 60's Festival

We're delighted to be part of the famous Rossendale 60s Festival for 2023. Come and join us as we celebrate all things swinging 60s with a 60s themed museum display and music in our Old Stables event space. Why not book a table for Sunday lunch and make a day of it!

1:00pm - 3:00pm  
FREE

Saturday 16 September

### Bringing Out Hidden Histories

#### Collections talk with our Curator

Join our Collections Curator to hear about the paintings on display, looking at different representations in the Whitaker's collection.

2:00pm - 3:00pm  
£3 | \*booking required  
Recommended age 14+

Thursday 12 October

### Hands up Who's Happy?

#### Theatre performance

Originally commissioned by the Victoria Wood Foundation and Bury's 'Happy Festival', HANDS UP WHO'S HAPPY? is a fast-paced, thought-provoking, laugh out loud comedy. As part of their commitment to community outreach, Bury Art Museum have sent casual gallery-assistant, Carl, to The Whitaker Museum (Julie Walters turned the gig down). He attempts to deliver a celebratory presentation, exploring the lasting legacy of local museums, and bigging-up some of the icons that have put Bury on the map; but his assumptions and long-held beliefs are challenged by a feisty young woman, Sam, who refuses to let Carl ignore the realities of history, the role of arts in society and the nature of happiness in the 21st Century.

7:30pm  
£12 | \*booking required  
Recommended for age 18+

Thursday 9 November

### Figuring Out... Arts Council England funding

#### Professional development for artists

In this session Mark Devereux will lead you through the intricacies of the two core Arts Council England funding programmes (Developing Your Creative Practice & National Lottery Projects Grants) available for individual applicants. Mark will share up-to-date information, top tips and information to help participants learn how to frame an idea into a successful project. The session will offer information and advice on how to target an application through use of language and highlight some of the hidden tips to make your project stand out.

6:30pm - 8:00pm  
£12 | \*booking required  
Recommended for age 18+





# BIG SCREEN

ALL TICKETS £7.50 | £6 Student/conc

Book via our website - [www.thewhitaker.org](http://www.thewhitaker.org)

CINEMA  
FOR ALL

Film  
Hub  
North



Thursday 7 September

## Jazz On A Summer's Day

1959, Directed by Bert Stern

Join us as we bid a fond farewell to summer 2023 with this fascinating document of the 1958 Newport Jazz Festival blending live performances together and footage of the city. As day turns to night, the soulful music ranges from bebop jazz to gospel, with performances from Dinah Washington, Thelonious Monk, Chuck Berry, Louis Armstrong, Mahalia Jackson and Chuck Berry.

83 mins | 7:30pm | U

United States | English Subtitles



Thursday 21 September

## Everything Everywhere All at Once

2022, Directed by Daniel Kwan & Daniel Scheinert  
Oscar winner for Best Picture this year, a Chinese immigrant, Michelle Yeoh is swept up in a wild adventure where she alone can save the world, by exploring other universes connecting with the lives she could have led – and gets lost in the infinite worlds of the multiverse. 'Paying tribute to the vast repertoire of Hollywood classics and world cinema, the film strikes an immaculate balance between mind-blowing originality and nostalgic cinephilia', Little White Lies

139 mins | 7:30pm | 15

United States | English Subtitles

£7.50 | £6 Student/conc



Thursday 5 October

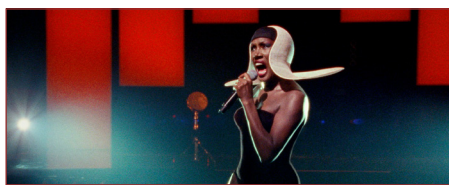
## Rye Lane

2022, Directed by Raine Allen-Miller

Raine Allen-Miller's acclaimed directorial debut follows two youngsters reeling from bad break-ups who connect over a particularly eventful day sat against a backdrop of sunny south London locales (Peckham, Brixton and the South Bank). A film that will leave you 'with a smile on your face, a spring in your step and (hopefully) a renewed confidence in next-wave British film-making', Mark Kermode.

82 mins | 7:30pm | 15

United Kingdom | English Subtitles



Thursday 19 October

## Grace Jones: Bloodlight And Bami

2017, Directed by Sophie Fiennes

Join us to celebrate a true original, style and musical icon during this year's Black History Month. Sophie Fiennes follows singer and actress Grace Jones behind the scenes: in the recording studio, backstage and at home with her extended family in Jamaica, and intersperses candid, revealing footage with live performances by Jones. 'Sharp portrait of an iconic extraterrestrial', Peter Bradshaw, The Guardian

115 mins | 7:30pm | 15

United Kingdom, Ireland | English Subtitles

£7.50 | £6 Student/conc



Thursday 2 November

## The Fablemans

2022, Directed by Steven Spielberg

Steven Spielberg's autobiographical ode to film-making in our two films in November inspired by storytelling and the weird and fantastic world of Hollywood. Growing up in post-World War II era Arizona, young Sammy Fabelman aspires to become a filmmaker as he reaches adolescence, but soon discovers a shattering family secret and explores how the power of films can help him see the truth. 'Infused with family warmth, but with a knowing adult eye on the loss of innocence, it is one of the year's most genuinely heartfelt films', BBC stars Michelle Williams.

151 mins | 7:30pm | 12

United States | English Subtitles



Thursday 16 November

## Barton Fink

1991, Directed by Joel Coen & Ethan Coen

A Coen brothers classic and winner of the Palme D'Or and two other major awards at Cannes. A satirical tale of a 1940s playwright who accepts an offer to write movie scripts in L.A. Struggling with writer's block while staying at the eerie Hotel Earle, an incongruous series of events continues to distract him. 'One of their (the Coens) most enigmatic, enduring movies', Rolling Stone, stars John Turturro and John Goodman.

116 mins | 7:30pm | 15

United States | English Subtitles



Thursday 7 December

## Hairspray

1988, Directed by John Waters

Thirty-five years after the release of John Waters' Hairspray, what better way to celebrate the festive season than to enjoy the original 1988 bubblegum musical comedy starring Ricki Lake, Sonny Bono, Debbie Harry, and Divine. Set in 1962 Baltimore, Maryland, the film revolves around self-proclaimed "pleasantly plump" teenager Tracy Turnblad as she pursues stardom as a dancer on a local TV show and rallies against racial segregation. 'Remember backcombing and the beehive, pale-pink lipstick, acid yellows, that first kiss? Waters' most hygienically commercial film is a Retro schlock-fancier's delight', Time Out

92 mins | 7:30pm | 15

United States | English Subtitles



Why not book a table  
in The Bar & Kitchen?

2 course | £16.25

3 course | £20.50

Bar &  
Kitchen  
AT THE WHITAKER



# Celebrations

at the Whitaker

The Whitaker Museum is an ideal backdrop for any event. Whether it's a significant birthday, wedding, anniversary, christening, or a celebration of life, whatever the theme we can weave its story within our walls, ready to wow and create lasting memories.

Located in the Rossendale Valley and set within the beautiful Whitaker Park, the museum is steeped in history and provides the perfect setting for your wedding or celebration. Recently extended and redeveloped, allowing for the creation of new spaces to host events that offer a modern or historic interior and outdoor spaces.

The Whitaker has spaces available to hire during the day for breakfast meetings, presentations, product launches, private dining and corporate away days.

To find out more and to enquire please visit [www.thewhitaker.org/venue-hire](http://www.thewhitaker.org/venue-hire) to download our brochure and complete our enquiry form.



## Corporate

Hire available

Weddings | Parties | Celebrations



# Bar & Kitchen

AT THE WHITAKER

Open Wednesday - Sunday  
Late night Thursday till 8pm

Lunch | Coffee | Cocktails | Brunch  
Sunday Roast | Breakfast | Afternoon Tea



## SUPPER

Thursday Night

## CLUB

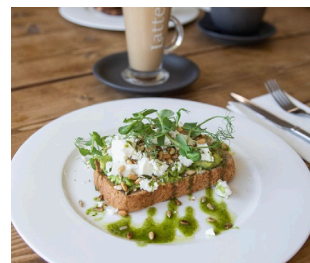
2 course | £16.25  
3 course | £20.50

Join us every Thursday Night  
for our Supper Club!

Our special offer runs from  
4 pm till 8 pm, pick from our  
small plates, main courses, or  
desserts.

Homemade and local  
produce products from  
Rossendale.

DOWNLOAD  
OUR MENU  
VIA OUR WEBSITE



## GIFT VOUCHER AVAILABLE

Makes a perfect gift for a loved one

follow us on social media

Bar and Kitchen at The Whitaker @whitakerbarandkitchen





## Family Activities

Saturday 2 September

### Family Antics at the Museum

Join us for our family antics this month as we explore the magical world of puppets! Come and make your own puppet and take it home to put on a show.

11:00am & 1:00pm

£3 per child | \*booking required

Recommended for age 4+

Saturday 7 October

### Family Antics at the Museum

It's World Space Week this week so join us as we blast off. Come and do some space themed crafts, exploring other planets, stars and even some alien beings!

11:00am & 1:00pm

£3 per child | \*booking required

Recommended for age 4+

Saturday 4 November

### Family Antics at the Museum

As it's nearly bonfire night, we'll be doing some firework crafts to celebrate. Come and show us your creative flare!

11:00am & 1:00pm

£3 per child | \*booking required

Recommended for age 4+

Thursday 9 November

### Cottonshed Theatre Company: Beware of the Doll

We're delighted to be hosting the premiere of *Beware of the Doll*, brought to us by Cottonshed Theatre Company. Inspired by the Cabinet of Curiosities and taxidermy pieces at The Whitaker, this show has been expertly conceived and created by the children's section (7-11 years) of this inclusive theatre group. Come along and experience the weird, scary and spooky side of theatre!

7:00pm

£5 per child | \*booking required

Recommended for age 6+

Saturday 28 October

### Halloween special: Curator's Talk

Join our Curator Gina, as she explores the gruesome, spooky, and gory, side of our collection. Expect to hear about witches potions, an unexploded bomb, and terrifying taxidermy. This talk will be family friendly

11:00am - 12:00pm

£3 | \*booking required

Recommended age 10+

Saturday 28 & Sunday 29 October

### Pumpkin Trail

Follow our pumpkin trail around the museum and grounds – how many can you spot?

All Day | FREE | Recommended for all ages.

## Christmas at The Whitaker



### Thursday 30 November Blackburn Chamber Choir Performance

Blackburn Chamber Choir will be performing a concert and leading the audience in some Christmas carols. Join us as we kick off the festive period at The Whitaker.

7:30pm

£12 | \*booking required



### Saturday 16 December Create with Caroline: Christmas Family Workshop

Come and sew your own Christmas decorations for the big day! You can choose from a stocking, a Christmas pudding or a Christmas tree, or even bring your own creation to life, all ready to hang on your tree at home.

11:00am & 1:30pm

£10 | \*booking required

Recommended for age 18+



### Saturday 23 December Christmas Film: The Muppet Christmas Carol

Join Kermit, Miss Piggy, Gonzo and the gang for a tasty hot chocolate and film matinee as the Muppets universe re-tell Charles Dickens' immortal classic "A Christmas Carol".

1:30pm

£6 | \*booking required

Rated PG

## HALLOWEEN SPECIALS

Wednesday 25 October

### Halloween Antics at the Museum!

It's a scary time at the museum – come and join us as we get ready. Paint your own pumpkin to take home or make a scary mask to dress up for Halloween!

11:00am & 1:00pm

£3 per child | \*booking required

Recommended for age 4+

Saturday 28 & Sunday 29 October

### Pumpkin Trail

Follow our pumpkin trail around the museum and grounds – how many can you spot?

All Day | FREE | Recommended for all ages.

## WINTERFEST at the whitaker

SATURDAY 2 & SUNDAY 3 DECEMBER

Sat 12pm - 8pm | Sun 10am - 4pm

### JOIN THE WHITAKER THIS CHRISTMAS AS OUR WINTER FESTIVAL RETURNS

Choirs | Music  
Mulled Wine | Festive Food  
Crafts & Makers Market

We'll be holding our annual winter festival. We'll have food, music, drinks, and craft stalls – come and buy those handmade Christmas presents or even treat yourself to a little gift. And for the little ones, there might even be a visit from Father Christmas!



Bar &  
Kitchen  
AT THE WHITAKER

## Christmas PARTY NIGHT

SATURDAY 9<sup>TH</sup> & 16<sup>TH</sup> DECEMBER

3 COURSE MEAL  
LIVE MUSIC  
DANCING TILL LATE

ONLY £45 EACH

Drinks packages available  
Tables seat 8-10 people.

TO BOOK EMAIL [HOSPITALITY@THEWHITAKER.ORG](mailto:hospitality@thewhitaker.org)



## Early Years Studio

These play-based sessions are designed especially for parents, grandparents, and carers to enjoy time with their little ones. Our safe space and Early Years Team provide everything you need to allow your child to lead you on a multi-sensory journey of play.

We ask for a ratio of 1 adult per 2 children due to the play-based nature of each session. Please be aware that if our capacity number of 18 children is reached there might be a small wait. The museum is free and our Bar & Kitchen is open from 10am.

**Age 12 months – 4 years**

### Drop in sessions

**Wednesday | 10:30am – 2:00pm**

**Starts again Wednesday 6 September**

**£5 a session, per child, pay on the day**  
**siblings under 12 months are free, we have a baby area each week.**

**KIDS EAT FREE**  
 in the Bar & Kitchen

\*T&C's apply. Promotions are only available on Wednesday, Thursday, and Fridays. One free children's meal with every paying adult when buying a main meal or sandwich on our food menu. Adult meal excludes breakfast, Sunday lunch, and starters/small plates. Children must be 12 or under.



## Fantastical Field Notes



### FREE magical fun in the Park

Find the Fay, the Fair Folk, The Hidden People, at The Whitaker Park. Find Professor Jigget's recordings of his Fantastical Field Notes out in the park

Pick your free map up from reception

## Your Visit

### Museum Collections

Come and visit our wonderful museum collections, including our Natural History galleries, including our famous Tiger and Python and Nellie the Elephant. Also our fascinating Social History galleries telling the story of our valley then and now. We also have our magical Cabinet of Curiosities, full of bizarre and wonderful items from our unique museum collection.

Free admission into the museum.



## Volunteering

The Whitaker has a growing friendly team of volunteers who are the heartbeat of all that we do. The volunteers share our passion to provide a unique, quirky, space rich in heritage and culture. If you would like to help us provide a sustainable museum that is freely available to everyone, this could be the start of your volunteering journey at The Whitaker.

### Why become a Volunteer?

When volunteering at The Whitaker not only are you contributing to the future of the museum, but you will benefit too.

- Make new friends when you join our welcoming team.
- Learn new skills with our training opportunities!
- Boost your confidence and self-esteem.
- Receive discounts and rewards.
- Access exclusive events and money can't buy experiences!

### Behind the Scenes

Our amazing team of dedicated volunteers help in all kinds of ways, we are a museum that's run by the people, for the people.

Whether it's running big events, maintaining the gardens, supporting activities or welcoming guests with a smile, we have lots of opportunities available.

Visit [thewhitaker.org/become-a-volunteer](http://thewhitaker.org/become-a-volunteer) for more information and FAQ on volunteering.



## Visit our shop

Inspired by The Whitaker's contemporary art exhibitions and eclectic museum collection. With a selection of books, zines, vinyl records, children's books and toys and gifts. The Whitaker Shop has been carefully curated by our museum and gallery staff and volunteers.

As well as supporting local artists, makers and creatives right here in Rawtenstall, your purchase will also ensure that we can keep The Whitaker alive for future generations.

### Hand Selected

Discover new poetry, novels, memoirs, zines and essay collections – along with our hand-picked selection of vinyl records.

### Supporting Our Artists and Makers

Our team also work with artists, makers, creatives and businesses working locally, nationally and internationally to curate a selection of gifts, artworks and prints.

And don't forget, we're open until 8pm every Thursday for late-night shopping.





**Activities**  
across the Valley

In partnership with Rossendale Leisure Trust.  
Delivering arts, leisure & culture across  
the Rossendale Valley.

To find out more visit [www.rltrust.co.uk](http://www.rltrust.co.uk)

**Activities**  
across the Valley

In partnership with Rossendale Leisure Trust.  
Delivering arts, leisure & culture across  
the Rossendale Valley.



[www.thewhitaker.org](http://www.thewhitaker.org)

For museum and gallery enquiries  
info@thewhitaker.org  
01706 260 785

For Bar & Kitchen and event enquiries  
hospitality@thewhitaker.org  
To book a table call 01706 394111 or  
visit our website

For information about our ongoing programmes and events and how to book please visit our website [www.thewhitaker.org](http://www.thewhitaker.org)

**Lancashire**  
Tourism Awards  
— 2021 —  
**WINNER**  
CULTURAL VENUE/ORGANISATION  
AWARD







Registered Charity Number is 1202807

Explore the past, meet the present, create the future.

Haslingden Road, Rawtenstall, Rossendale, BB4 6RE  
01706 260785 • [info@thewhitaker.org.uk](mailto:info@thewhitaker.org.uk)



Supported using public funding by  
**ARTS COUNCIL  
ENGLAND**



**HERITAGE  
FUND**



**BRIAN MERCER TRUST**

**Rossendale**  
BOROUGH COUNCIL



**rossendale**  
leisure trust